



## **FTDI CHIP**

### **Industrial specification**

USB to serial converters from Single chip USB to RS232

USB 1.0/1.1 compliant, USB 2.0 Full Speed compatible

12 Mbps USB data rate

Transmit and receive LED drive .

Serial Interface 1 Port

15 KV ESD protection for all serial ports

Connector: DB9 Male and MINI USB B type

Cable:USB Type A and MINI USB B Type

.Driver Support

Windows 98, 98SE, ME

Windows 2000

Windows XP and XP 64-bit

Windows Vista and Vista 64-bit

Windows Server 2003 and 2003 64-bit

Windows Server 2008 and 2008 64-bit

Windows 7 and 7 64-bit

Mac OS8/9,OS-X

Linux 2.4 and greater

## **Applications**

.Notebooks and Industrial PCs peripherals devices

.Terminal Adapters and POS terminals

.Peripherals interface

.General-purpose RS-232 data link

#### Serial Converter

Mode	Asynchronous serial communication
Speed	Up to 921.6kbps
Connector	DB9 Male
Signals	TXD,RXD,RTS,CTS,DTR,DSR,DCD ,RI ,GND
Protection	15KV ESD Protection for all signals
Data Bits	7,8
Stop Bits	1,2
Flow Control	RTS/CTS,X-On/X-Off
Parity	None,Even,Odd,Space,Mark
IRQ/IO Address	Assigned by BIOS
FIFO	TX Buffer 128 bytes, RX Buffer 256 bytes

#### Software

Driver Support	Windows 98, 98SE, ME, 2000, Server 2003, XP ,Server 2008, XP 64-bit Windows Vista, Vista 64-bit,Server 2008 R2,Windows 7,Windows 7 X64 Mac OS 8/9, OS-X Linux 2.4 and greater
----------------	--

#### Hardware

Power Input	MINI USB B type connector
Power Consumption	40mA max
LED	TXD,RXD
Dimensions	42.5(W)x22.5(H)85(D)mm
Weight	50g

Connector DB9 Male 9PIN Define

NO	DM9 Male
1	DCD
2	RXD
3	TXD
4	DTR
5	GND
6	DSR
7	RTS
8	CTS
9	RI

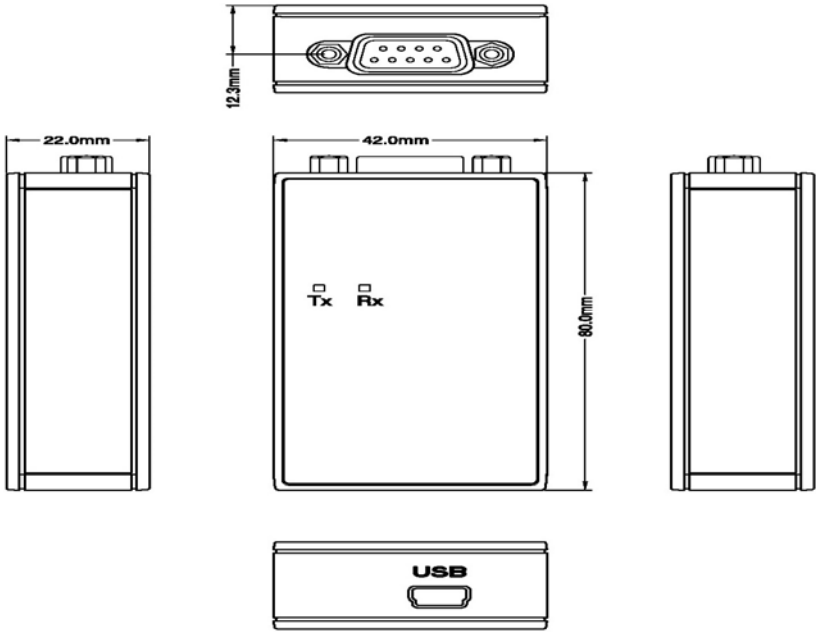
Environmental

Operating Temp	-30~75℃
Storage Temp	-40~85℃
Humidity	5~95% Non-Condensing
Case	PC

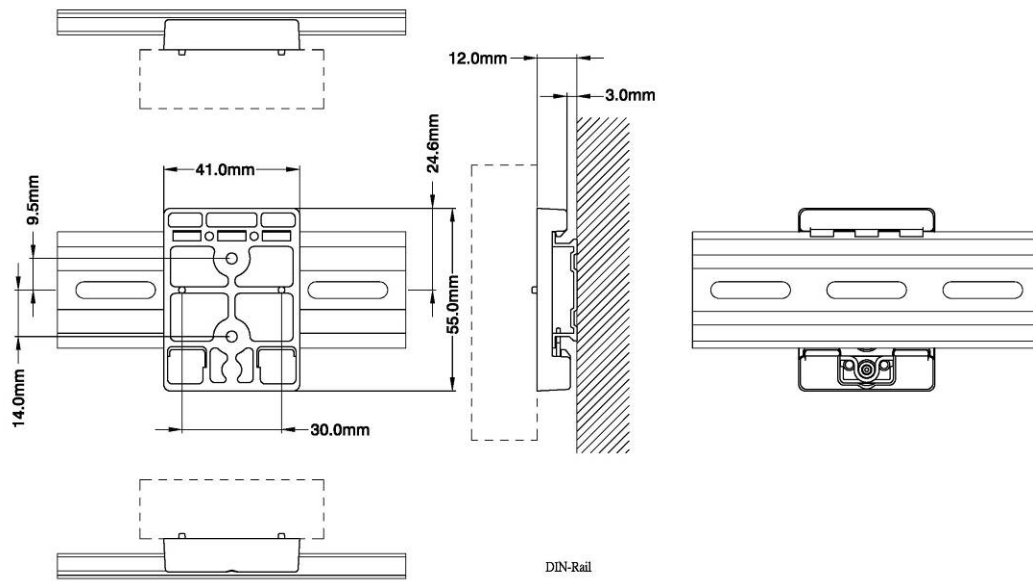
Approvals

CE ,FCC RoHs Compliant

Dimension



## DIN rail Dimension



## Ordering Information

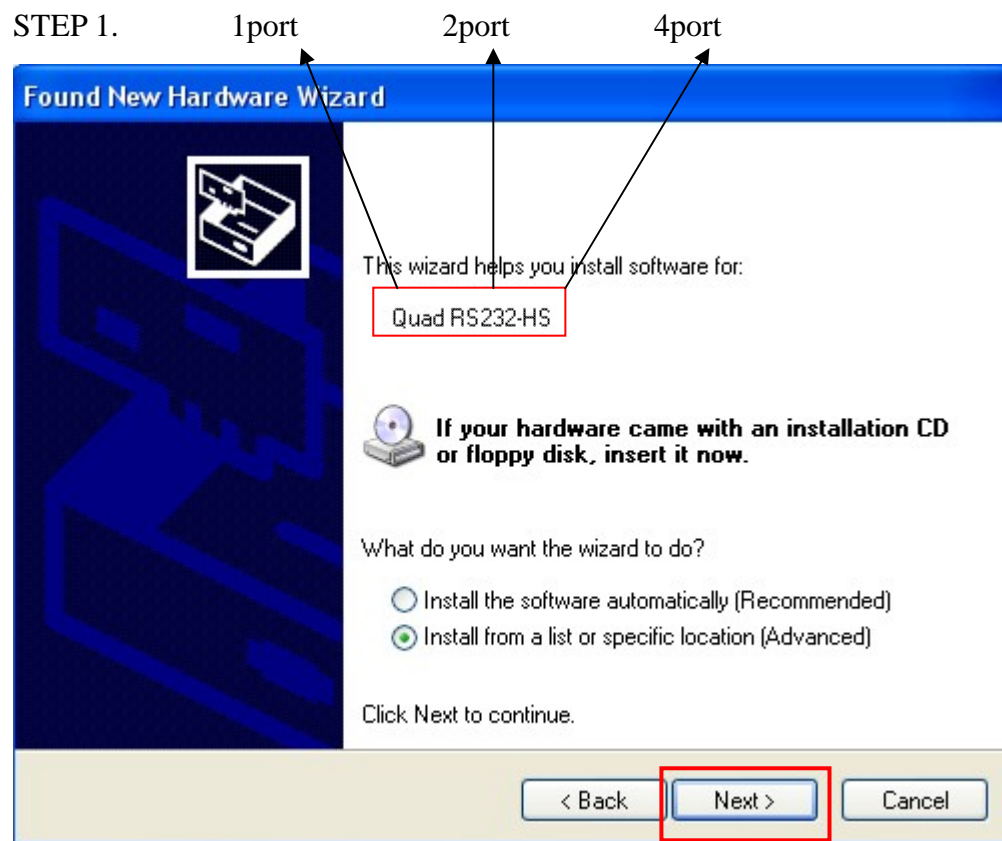
### Available Models

US-101 : USB to 1 port RS232

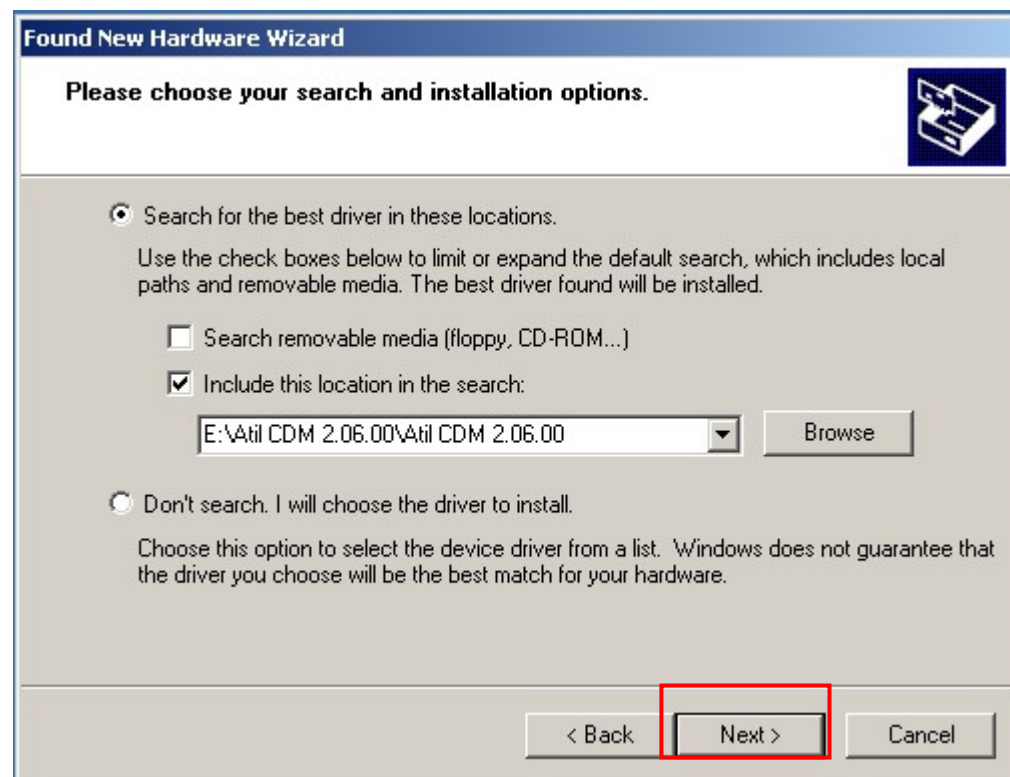
US-101-D : USB to 1 port RS232 and DIN rail

## Driver installation guide for windows XP

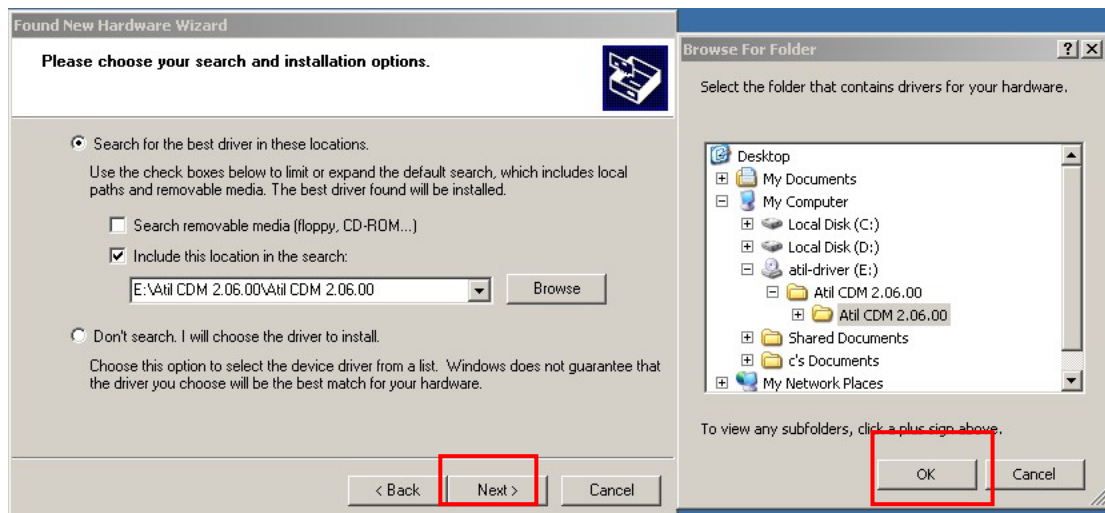
STEP 1.



STEP 2.



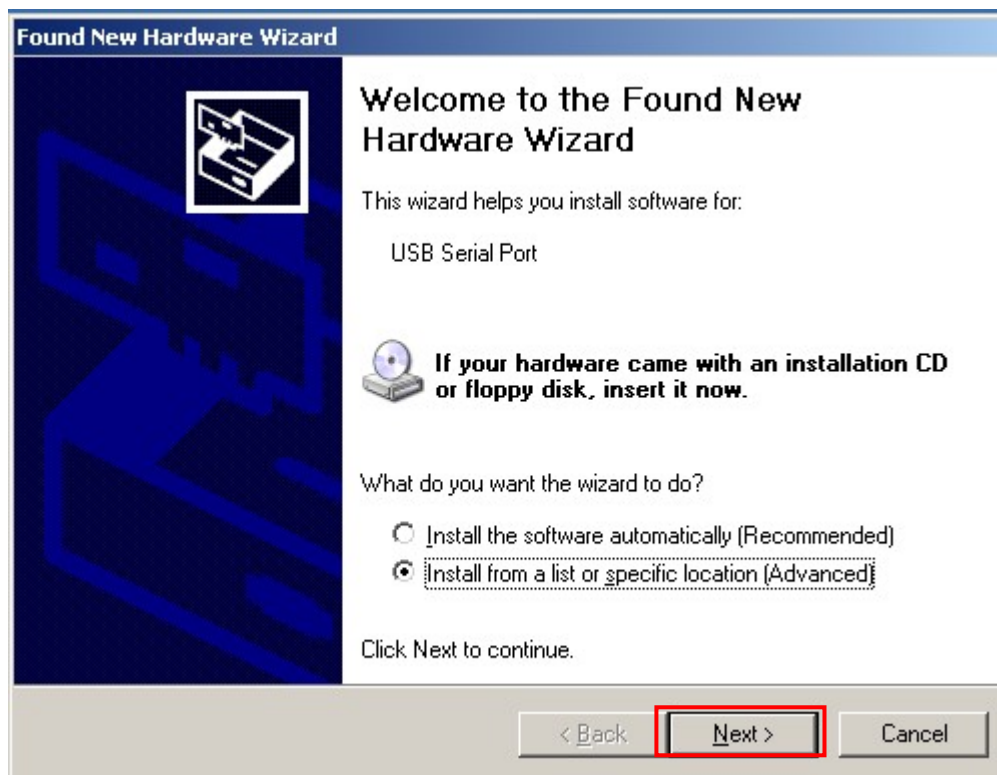
STEP 3.



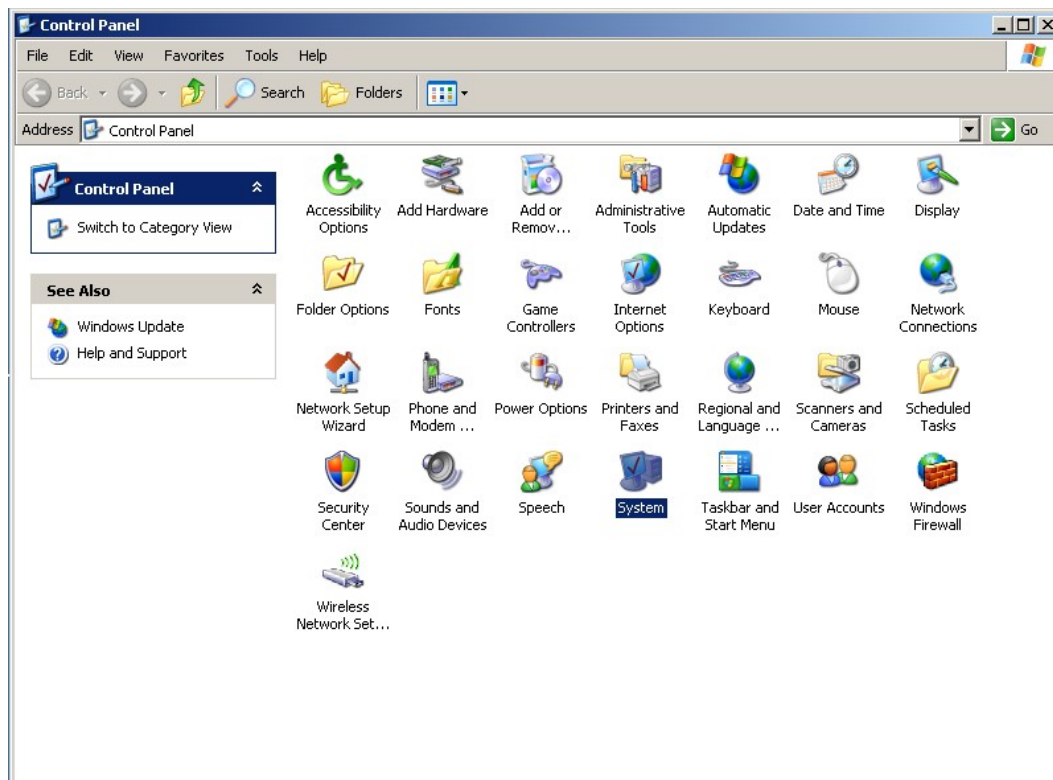
SETP 4.



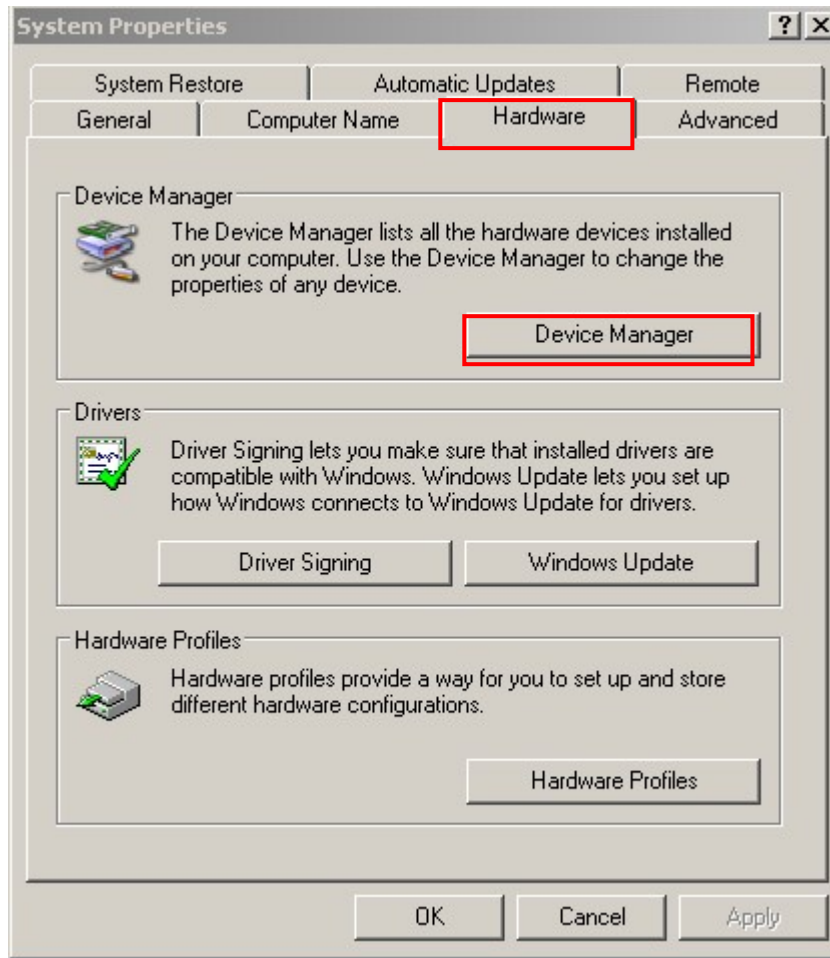
SETP 5.



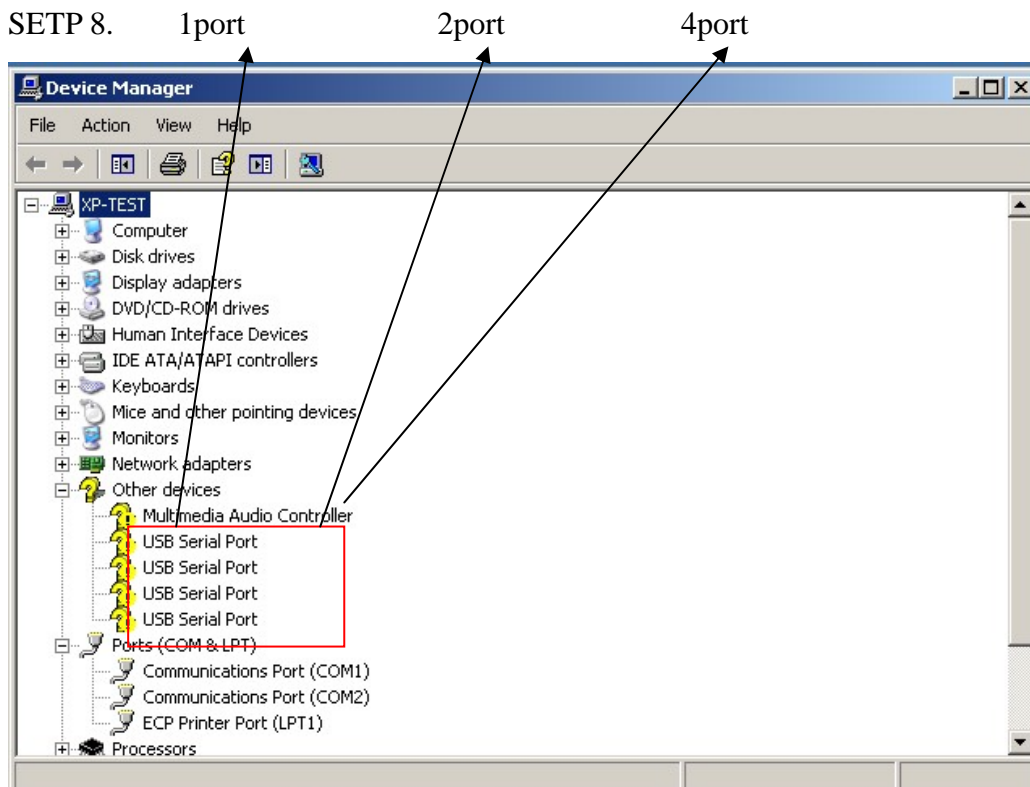
SETP 6.



SETP 7.

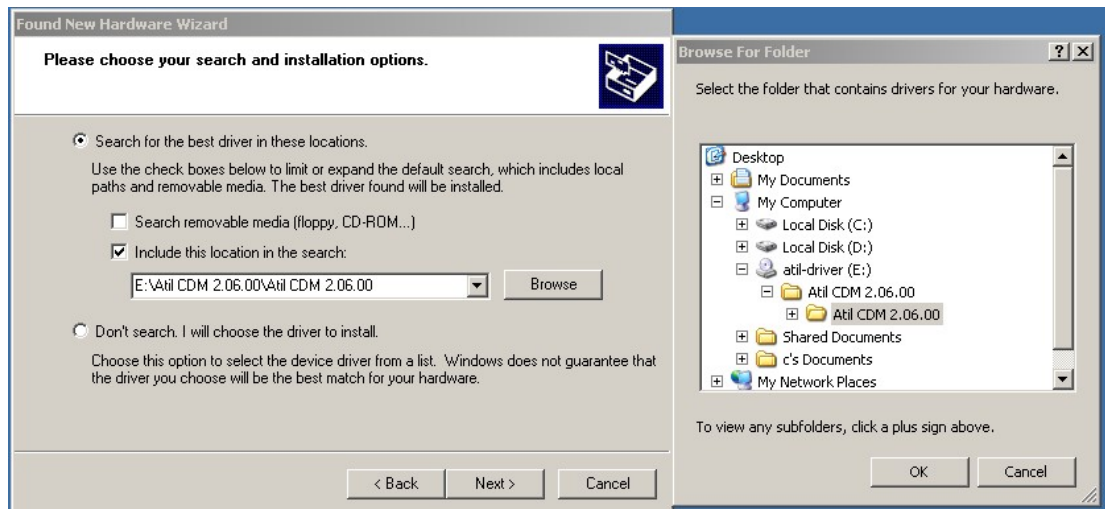


SETP 8.

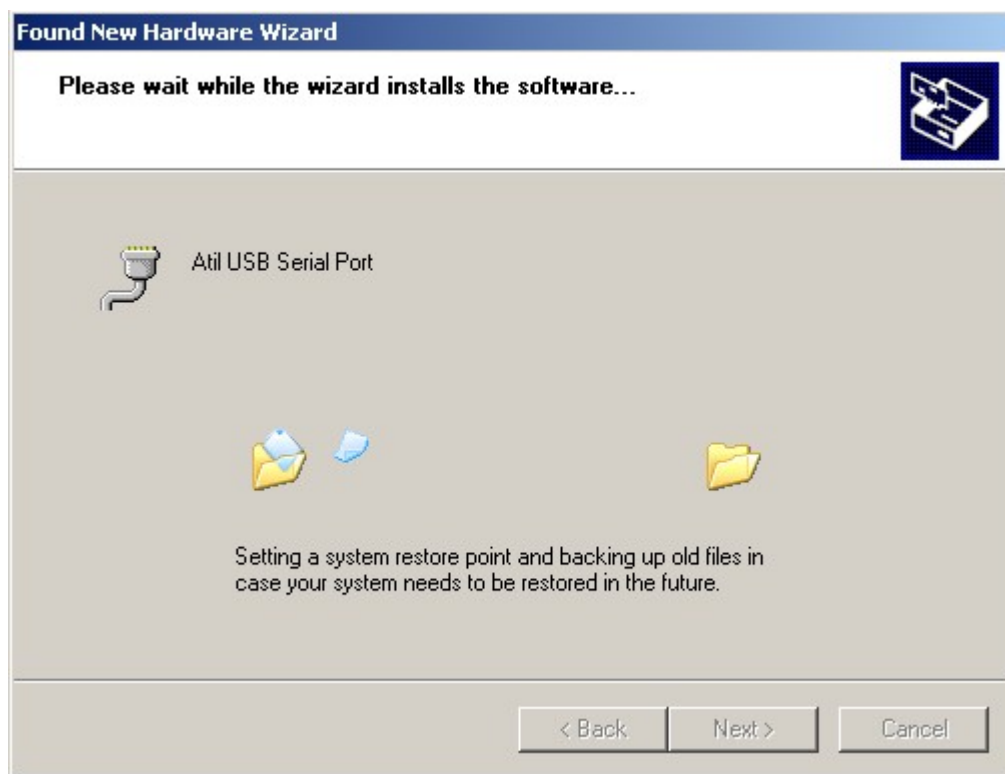
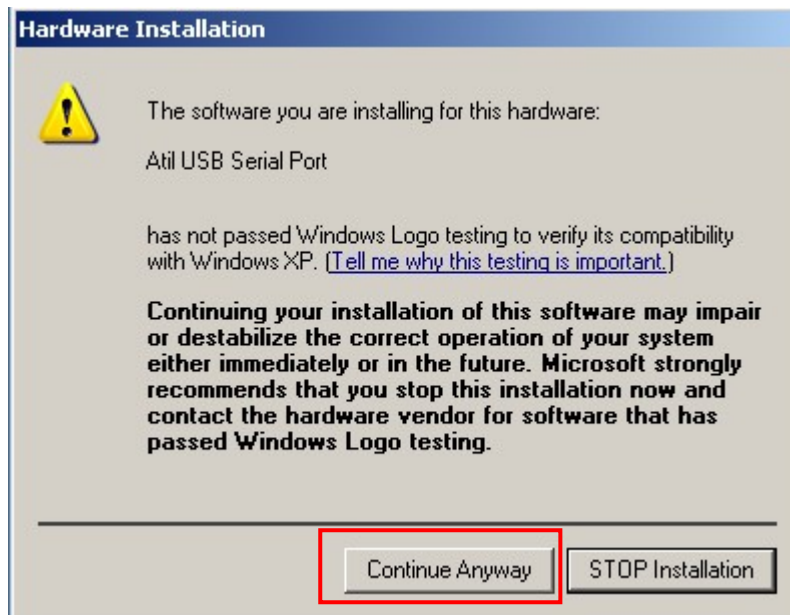




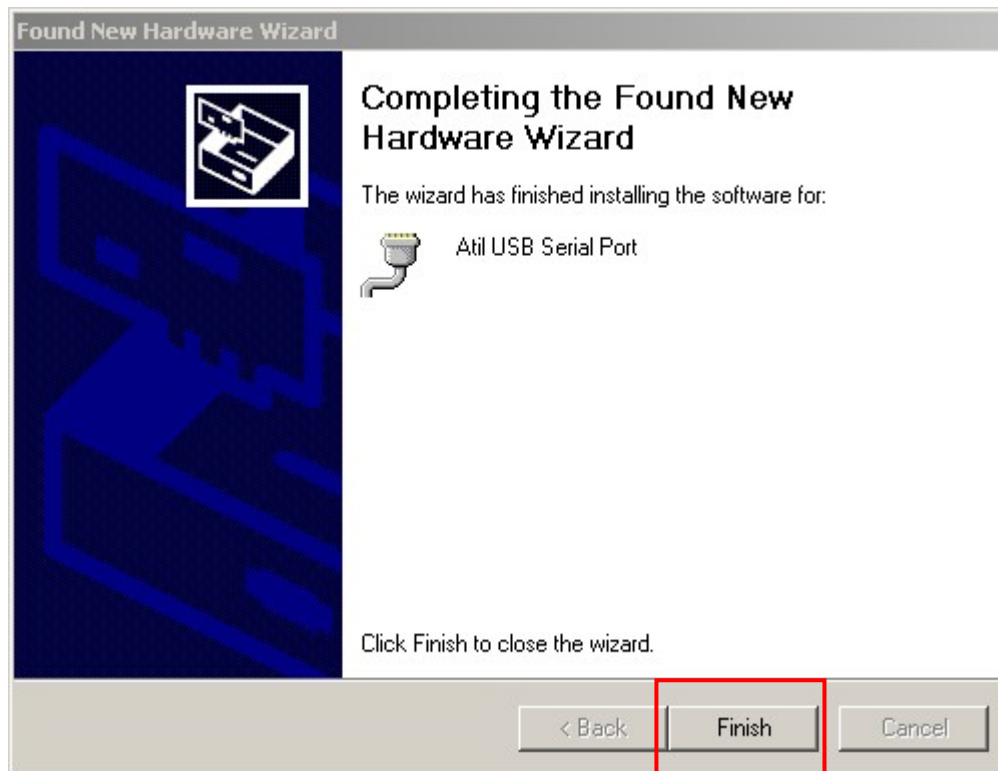
## STEP 9.



STEP 10..



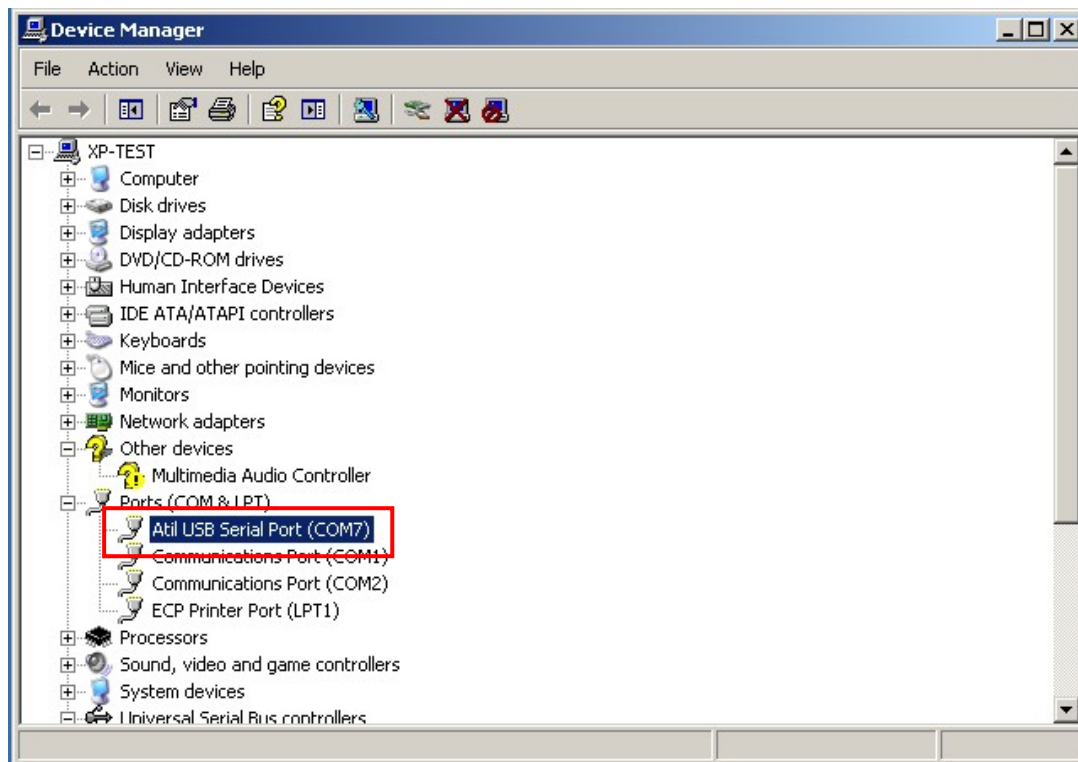
STEP 11.



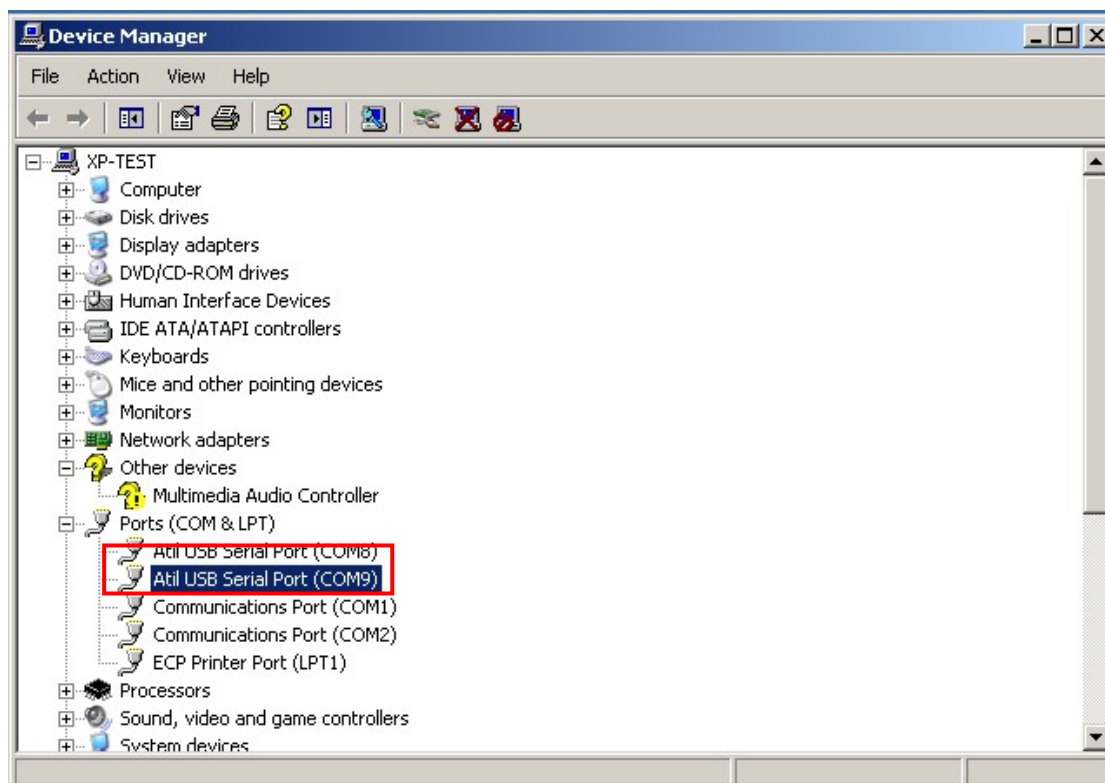
US-102 2port Loop STEP 9~11 two next

US-104 4port Loop STEP 9~11 four next

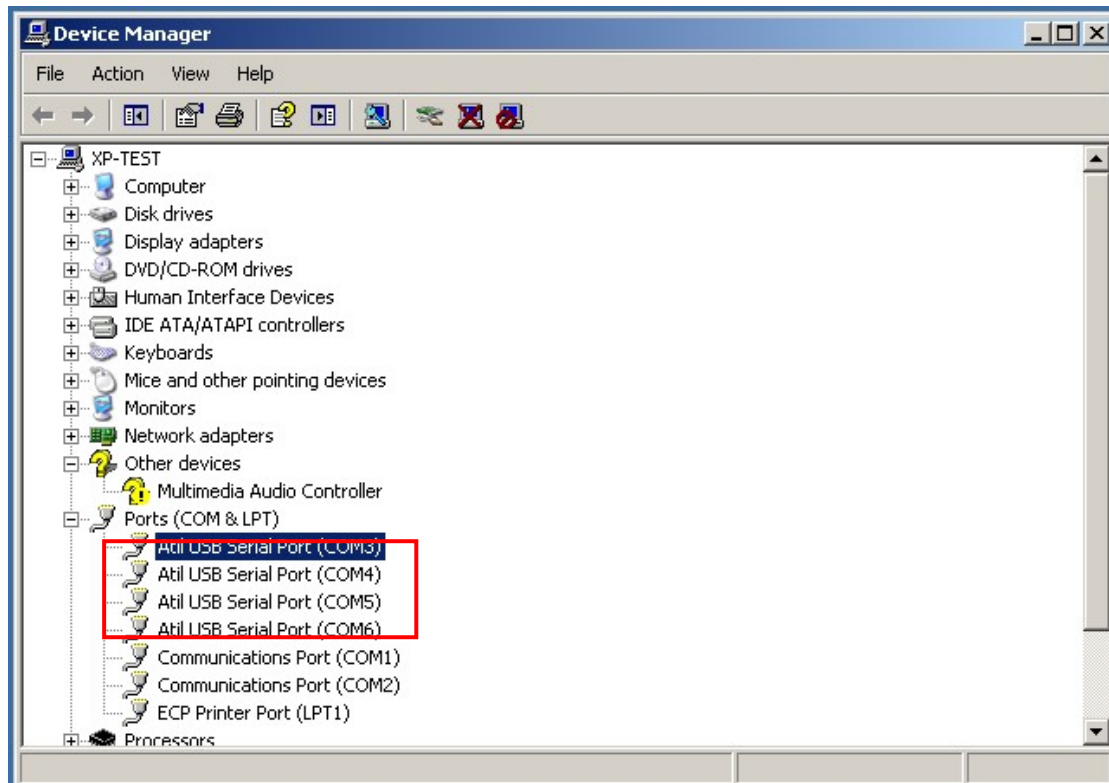
USB to 1port RS232/422/485



USB to 2port RS232

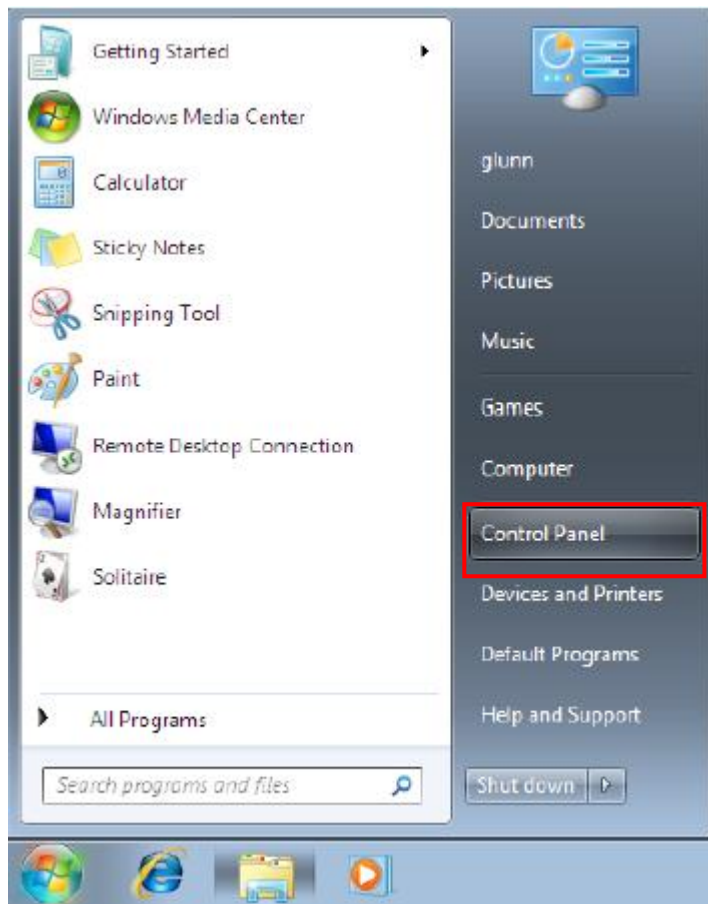


USB to 4port RS232

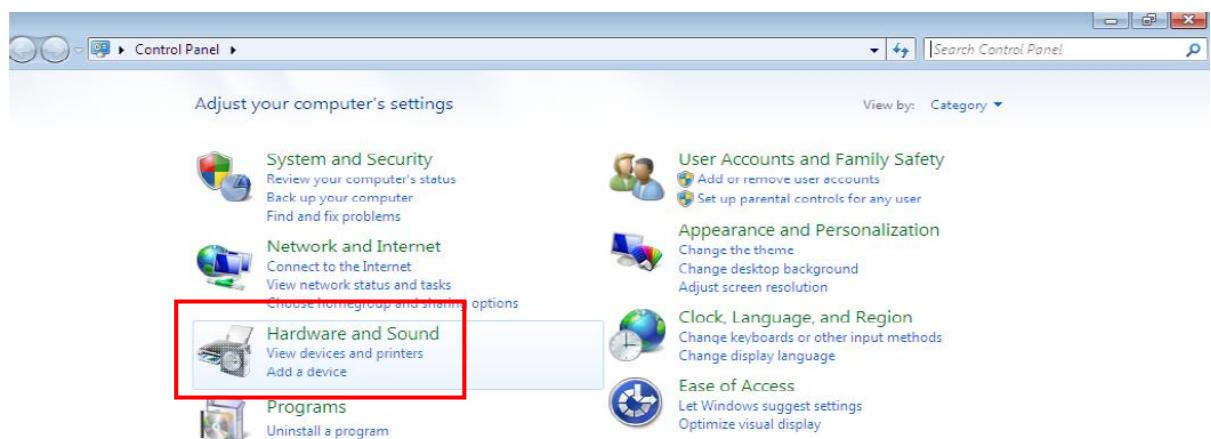


# Driver installation guide for windows 7

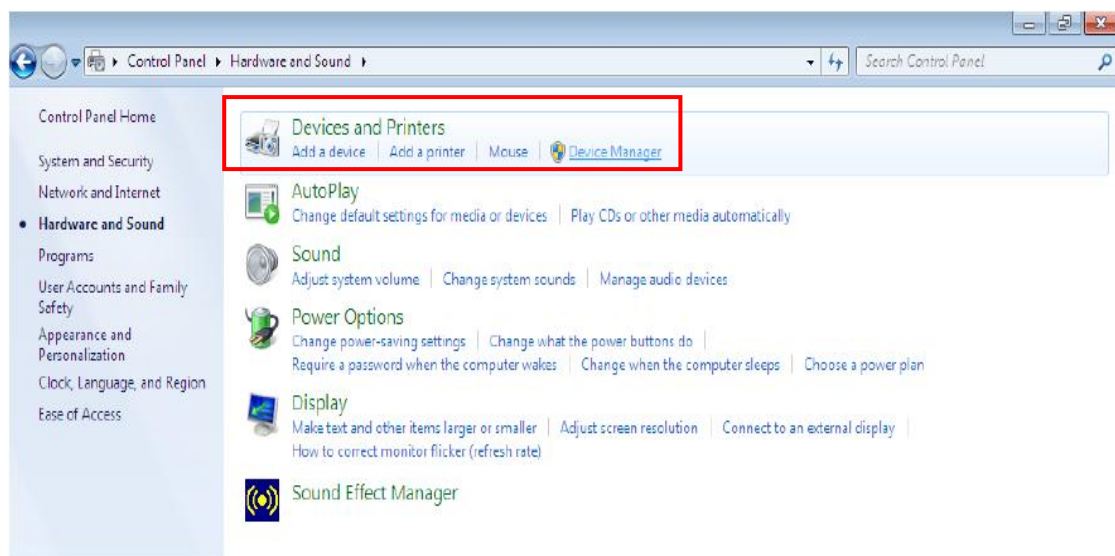
## Step 1



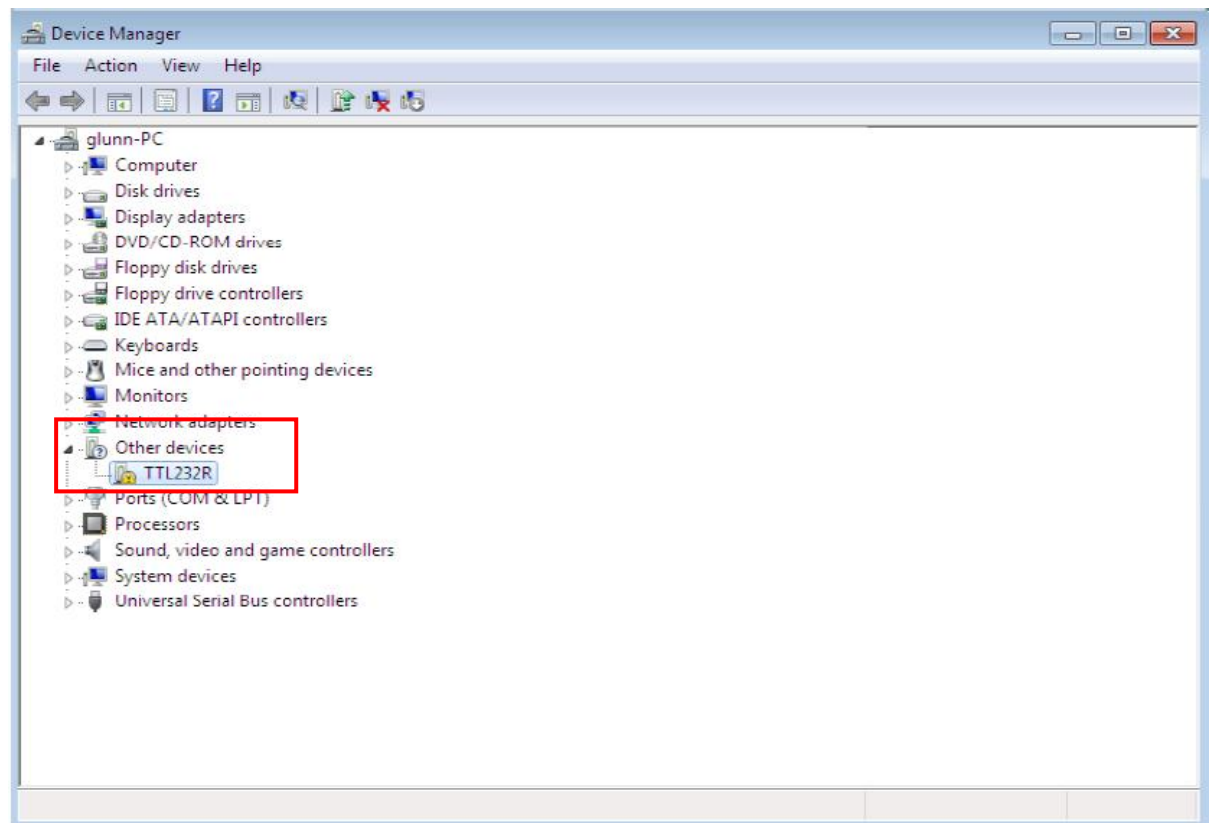
## Step2 Hardware and Sound



### Step3 Devices and Printers

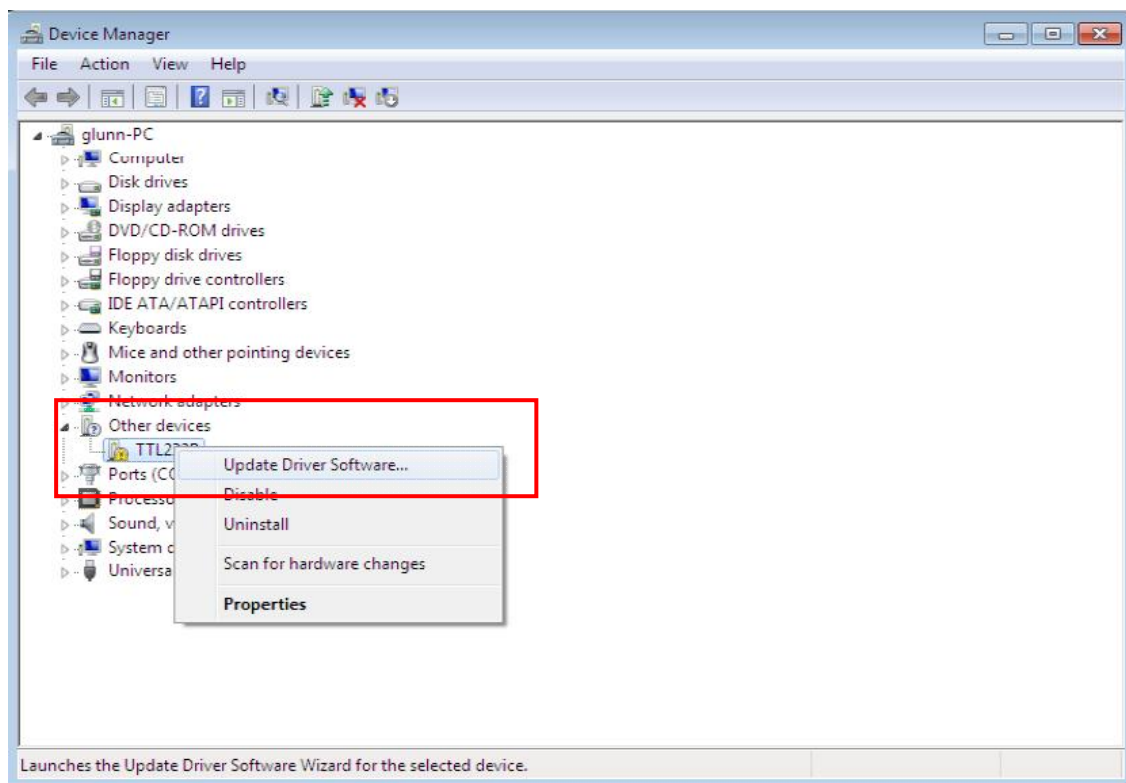


### Step 4 Other device

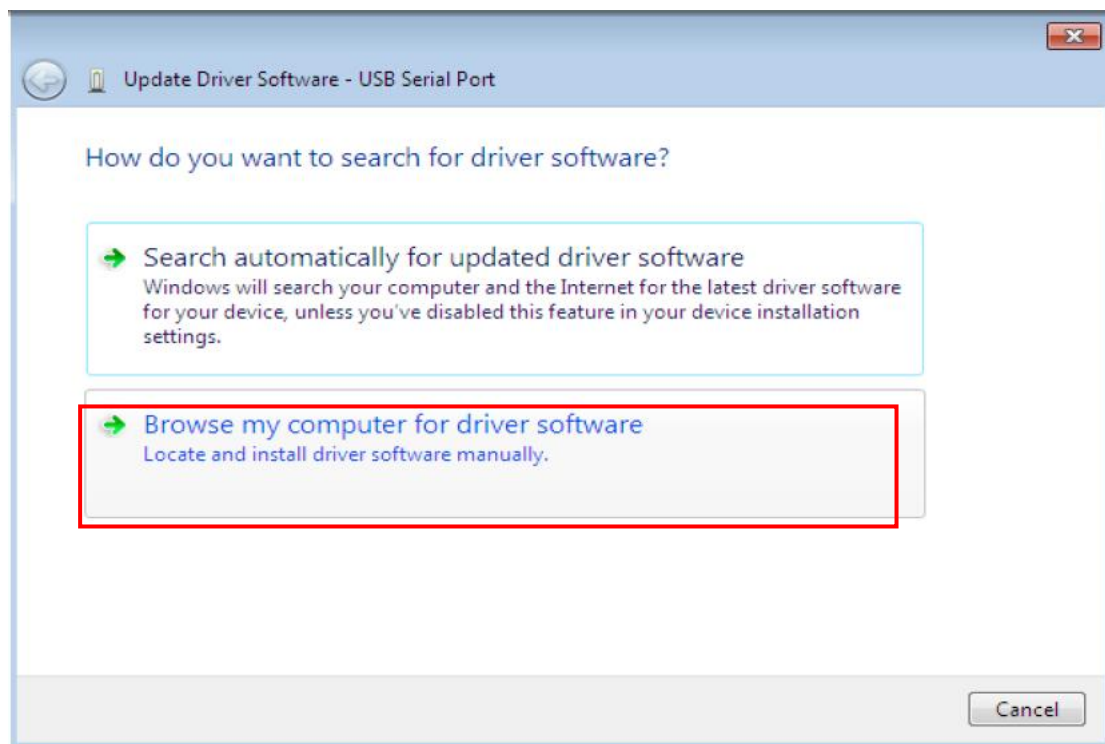




## Step 5 Update Driver Software



## Step 6

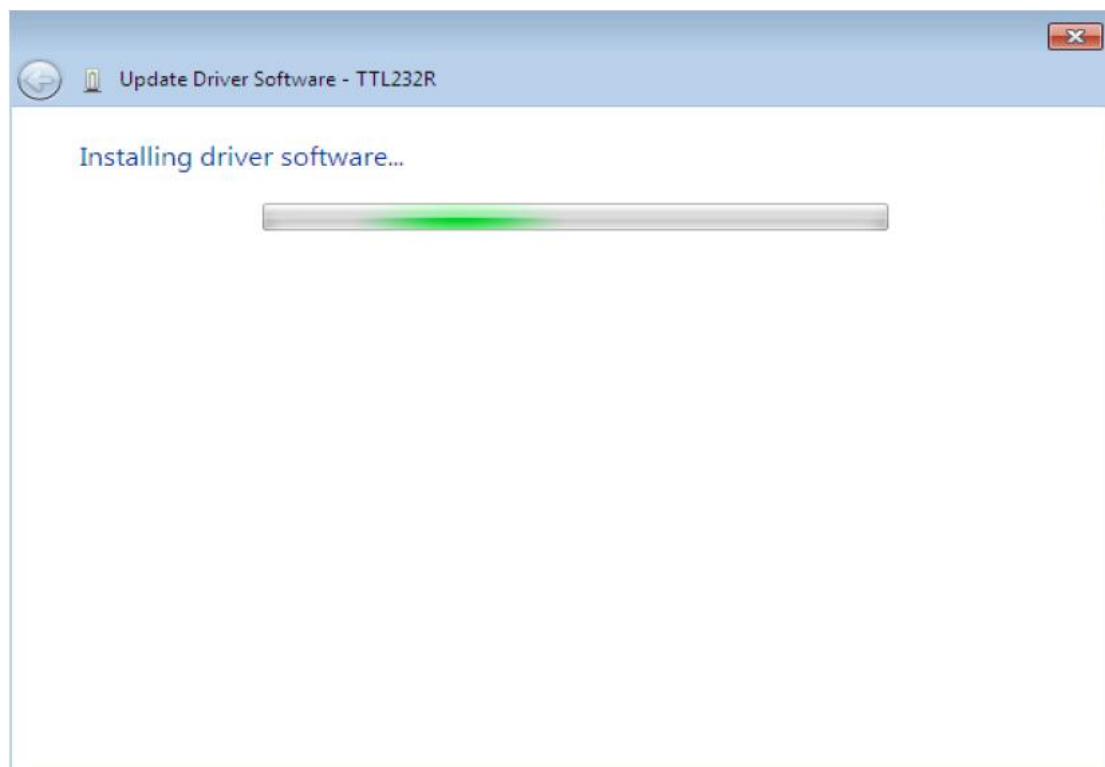




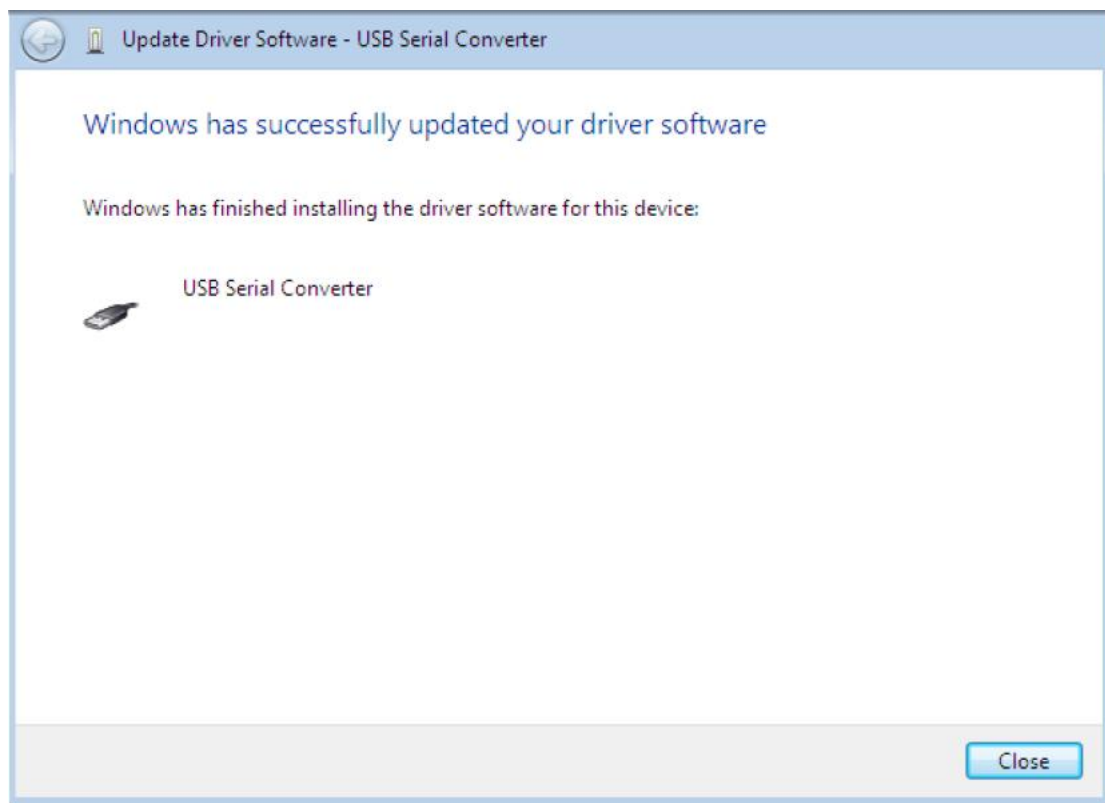
## Step 7



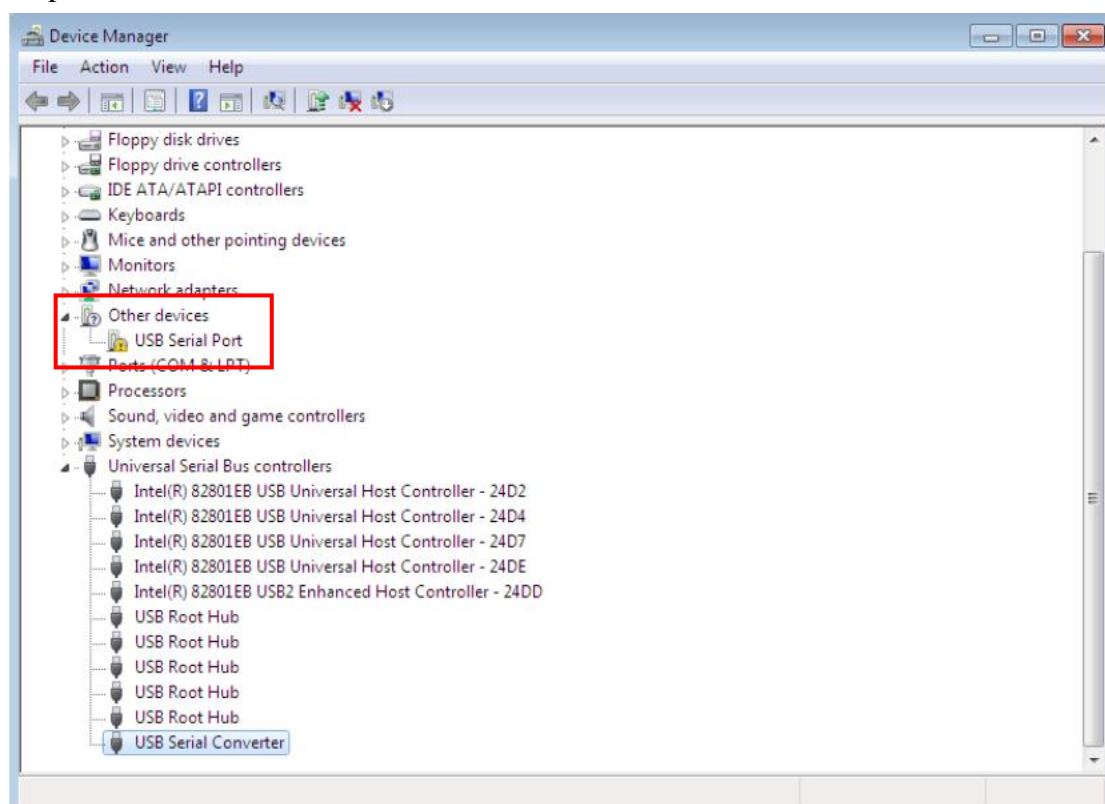
## Step 8



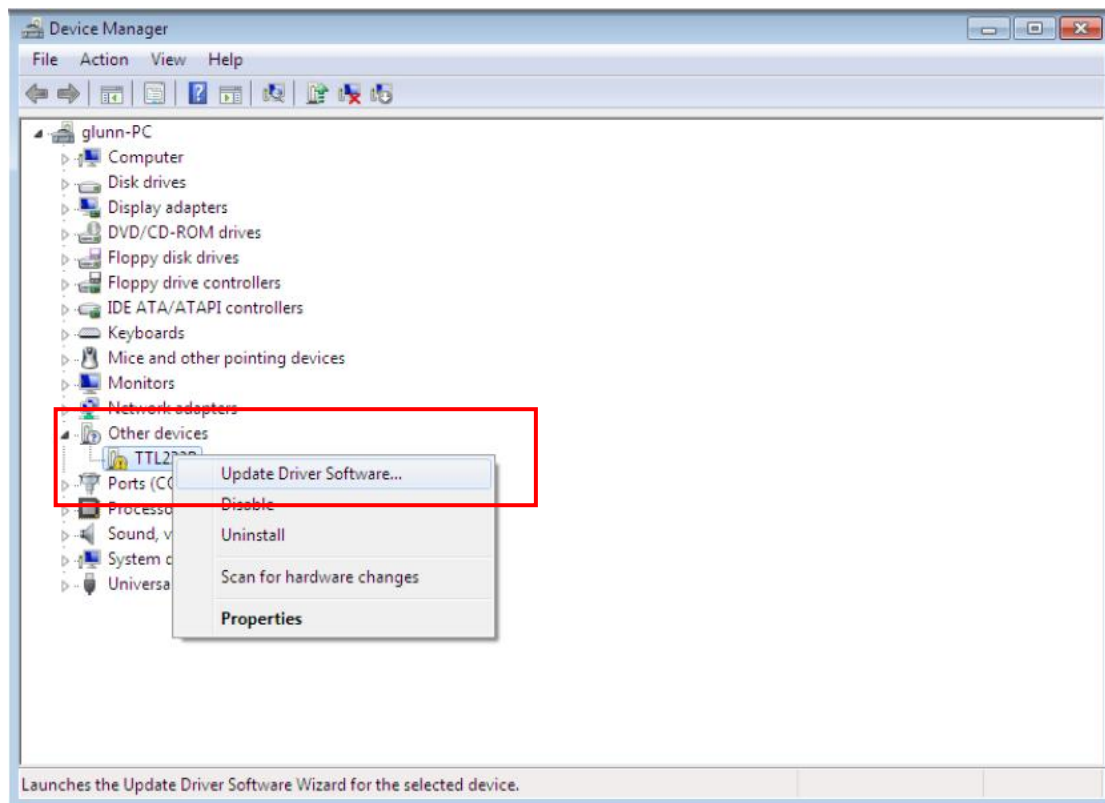
## Step 9



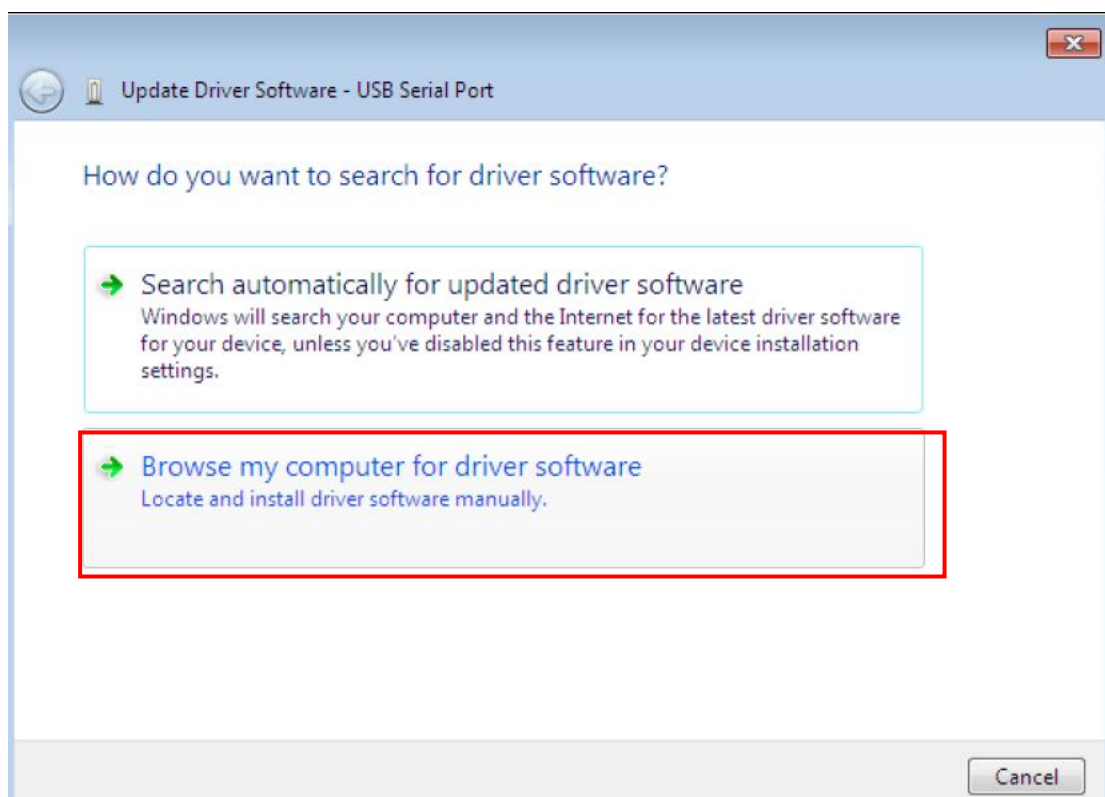
## Step 10 USB Serial Port



## Step 11 Update Driver Software



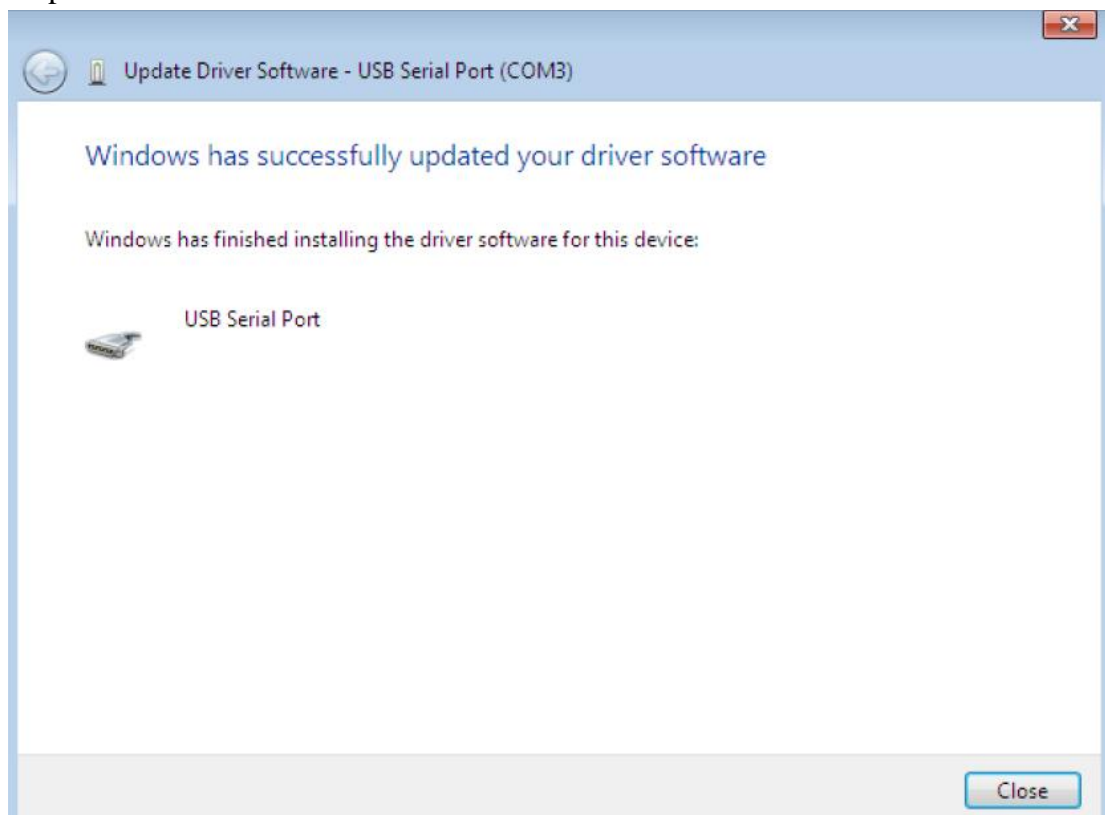
## Step 12



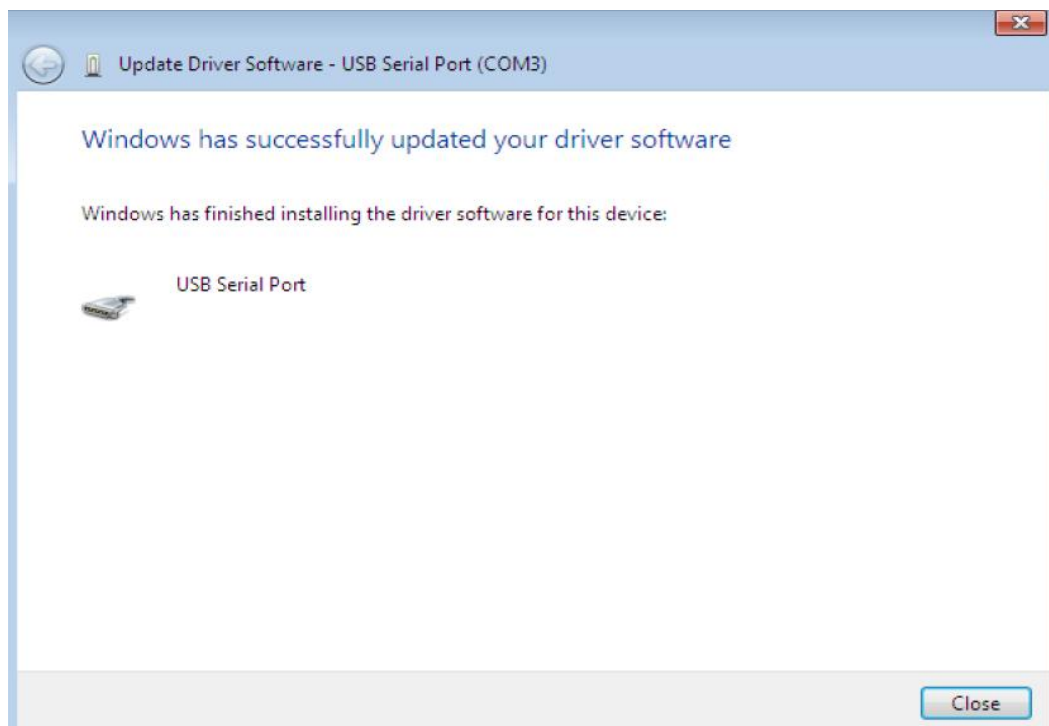
### Step 13



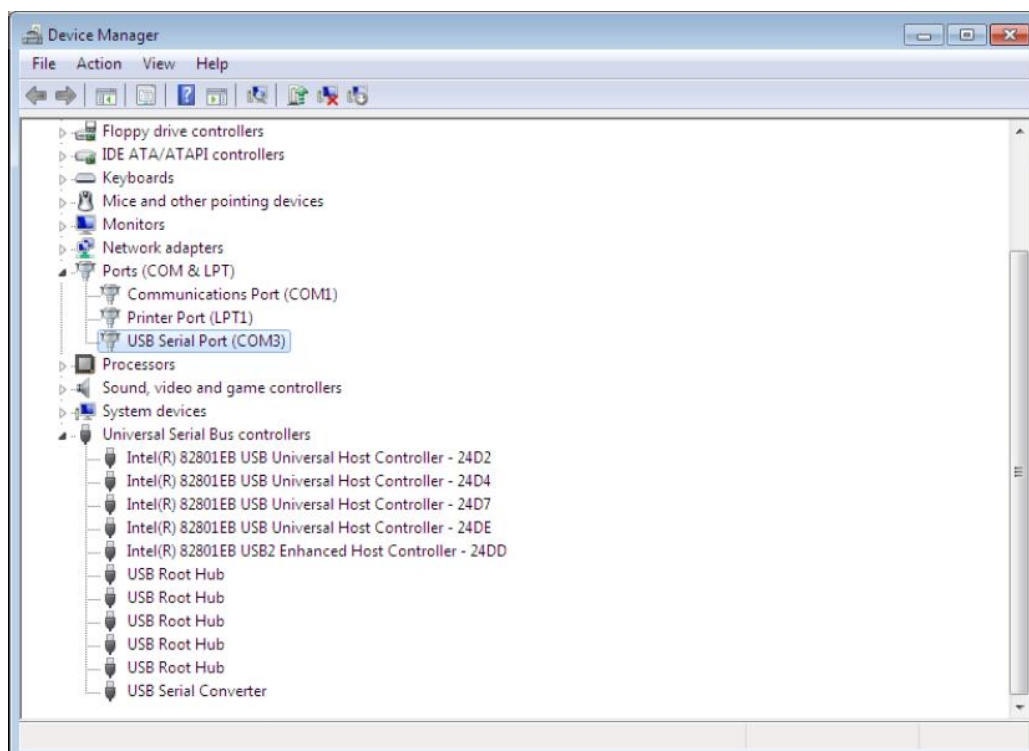
### Step 14



## Step 15



## Step 16



US-102 2port Loop STEP 5~16 two next

US-104 4port Loop STEP 5~16 four next

USB to 1port RS232/422/485

Website: [www.atil.com.tw](http://www.atil.com.tw)